

INSIGHTS INTO INSECTS

Welcome to the world unnoticeable organism in micro world . The Chapter starts with the experience which I have dealt in my field trips in micro environment

True Velvet Mite

The vibrant red attracts my eyes. An interesting illustration of how colors can be used as a communication tactic in the intricate interactions between predators and prey in the natural world is aposematism in velvet mites.



Spotted Locust

This colourful one, who becomes sometimes a terror to local farmers was handsome in my eyes. The photograph was taken from Chembra peak. It has a jet like mechanism of evicting a pungent smelled viscous mucous as a foam.



Indian jumping ant



Their unique appearance and ability to jump made them noticeable . These ants can shrink and then regrow their brains in a big way to reproduce. Their population is only seen in Indian .

Spur-throated grasshopper

They are small greenish hoppers with a highly camouflage to blend in with their surroundings . The mating behavior of such grasshoppers can be fascinating such as courtship rituals, including specific sounds or movements, to attract a mate. Ecologically play a crucial role in regulate plant populations by consuming vegetation and are a food source for various predators



Dewdrop spider

It was an unusual sight that brought me there. A small spider is waiting for its prey in another spider's web. Later I came to know that, they are kleptoparasites who steal the food on hosts web and sometimes feeds on juvenile spider itself.



Srilankan Weevil

Among the bluish waterlilies, I have found this white powdery creature on the leaves during a survey at Karappuzha dam. They pretend to be dead, when they are threatened.



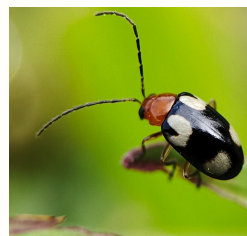
Jade jumping spider

As a rare one, it was his bouncing movement that drew my attention to it. When I went further into it, I realised that it had many more features than other spiders. They are myrmecophilic and thereby mimic ants. Their keen eyesight makes the process more easier. It was interesting to know that they will present some killed insects gifts for its mate.



White spotted flea beetle

It was busy eating leaves and twigs, but the white spots in its elytra were attractive to me. Besides its shining



pest on grapevine and cucurbitacea among other crops. They belong to the family 'leaf

beetles'. Due to their tendency to hop like fleas when startled, they are known as "flea beetles".