

There are over 6000 species of frogs in the world, in which 151 of them are found in Kerala and 136 of them endemic to western ghats. Among this 50 of them are endangered and threatened. College of veterinary and animal science University Pookode is biodiversity hotspot of large number of species. About 26 species of frogs are being identified inside the campus by the MS wildlife studies students over the time period.



A Malabar Gliding Frog That Fell Down From A Mango Tree



Mating of Malabar gliding frog

arboreal even though seen on bushes near ponds during their breeding seasons. This photograph was taken near the paddy field located in gothra. It was taken during the end of monsoon.



This Photo Is Taken Near The Gothra Classroom Inside Centre For Wildlife Studies.

**Raorchestes akroparallagi** (Variable bush frog). These are tiny, bush frogs seen from a lower elevation to a upper of 1200 ft. The variable bush frog was seen on the top of a bamboo leaf rolled inside it.

### Polypedates occidentalis



This picture is taken from the forest patch near the MH

(Charpa tree frog). Hour glass like structures are found on the dorsal side of this frog. These species of frogs are endemic to Kerala. They mainly feed on termite's ants and other insects.



This picture is taken from the forest patch near the MH

**Pseudophilautus wynaadensis** (Dark eyed bush frog/Wayanad bush frog). These belongs to Rhacophoridae family and endemic to western Ghats. It is associated with the under storey of tropical moist evergreen forest, shrubland etc.. It is nocturnal and arboreal. Feeds on termite's ants etc...

### Indosylvirana sp.



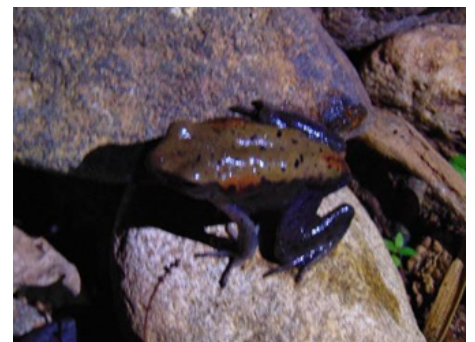
Photographed Near The Stream In Kolichal

Endemic to south and southeast Asia They inhabits these secondary and primary forests, also found near wetlands and perennial fast flowing streams. It is found at an elevation of 40 to 1145 m. their tympanum is very distinct and the thin



Malabar Tree Toad

### Clinotrasus curtipes



It Is Photographed Near The Clinic Inside Kvasu Campus

These frogs are very common in Kerala and are endemic to India. They are mainly seen in the tropical forests of western ghats. They can be seen from an elevation of 1600 to 6000 ft. Their head is large and the sides of the body have blackish fading to light brown towards the belly.



**Micrixalus\_saxicola**



**Photographed Inside The CWS Campus**

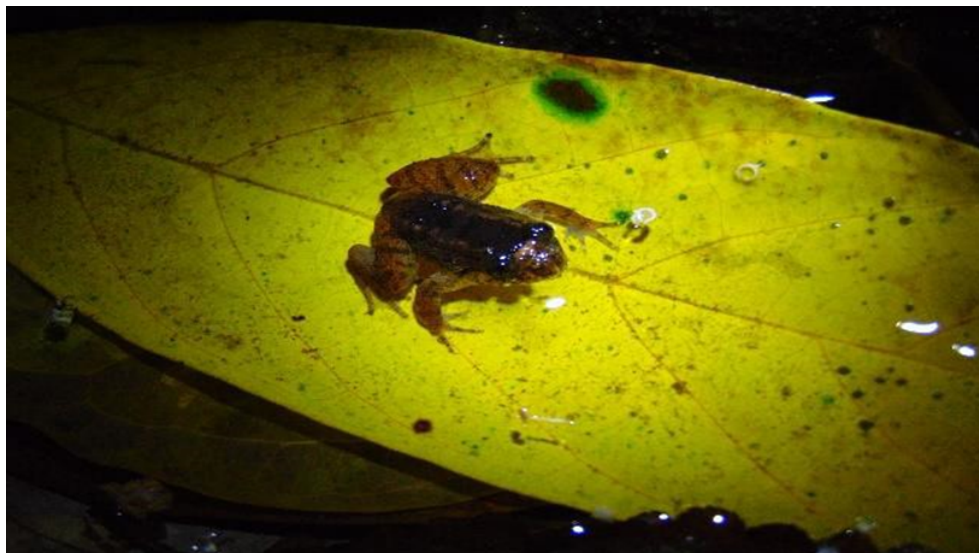
(Malabar tropical frog). These are small frogs that inhabits in the evergreen forest near the rocky mountain streams. Commonly seen at an elevation of 1500 to 4500 ft. They feed on the insects that are present on the leaf litters. The abundance of frogs inside the campus indicates the balance of the ecosystem and it reminds us to conserve this vanishing life forms.



**Indirana sp.**



**Road Kill Of A Frog Near The Entrance Gate Of Covas**



**Nyctibatrachus sp**

